

ABBREVIATIONS

AB.	ANCHOR BOLT	ELEV.	ELEVATION
ACT	ACOUSTICAL CEILING TILE	EMER	EMERGENCY
AFF.	ABOVE FINISHED FLOOR	ENCL.	ENCLOSURE
AGGR.	AGGREGATE	EQ.	EQUAL
AL.	ALUMINUM	EQUIP.	EQUIPMENT
ALT.	ALTERNATE	E.W.	EACH WAY
APPROX.	APPROXIMATE	E.W.C.	ELECTRIC WATER COOLER
ARCH.	ARCHITECTURAL	EXP.	EXPANSION
		EXT.	EXTERIOR
BD.	BOARD		
BLDG.	BUILDING	F.A.	FIRE ALARM
BLK.	BLOCK	F.D.	FLOOR DRAIN
BLK'G.	BLOCKING	F.D.C.	FIRE DEPARTMENT CONNECTION
BM.	BEAM	FDN.	FOUNDATION
BOT.	BOTTOM	F.E.	FIRE EXTINGUISHER
BTWN.	BETWEEN	F.E.C.	FIRE EXTINGUISHER CABINET
B.U.R.	BUILT UP ROOFING	FF.	FINISH FLOOR
B.W.	BOTH WAYS	F.H.C.	FIRE HOSE CABINET
		FIN.	FINISH
C.J.	CONTROL JT.	FL.	FLOW LINE
CLG.	CEILING	FLR.	FLOOR
CLK'G.	CAULKING	FLUOR.	FLUORESCENT
CLR.	CLEAR	FND.	FOUNDATION
C.M.U.	CONCRETE MASONRY UNIT	F.O.B.	FACE OF BRICK
COL.	COLUMN	F.O.C.	FACE OF CONCRETE
CONC.	CONCRETE	F.S.	FULL SIZE
CONN.	CONNECTION	FT.	FOOT OR FEET
CONSTR.	CONSTRUCTION	FTG.	FOOTING
CONT.	CONTINUOUS	FURR.	FURRING
C.T.	CERAMIC TILE		
		GA.	GAUGE
DEG.	DEGREE	GALV.	GALVANIZED
DET./DTL.	DETAIL	G.C.	GENERAL CONTRACTOR
D.F.	DRINKING FOUNTAIN	G.L.	GLASS
DIAG.	DIAGONAL	GR.	GRADE
DIA.	DIAMETER	GYP.	GYP. BOARD
DN.	DOWN	GYP. BD.	GYP. BOARD
D.S.	DOWNSPOUT		
DWG.	DRAWING	H.B.	HOSE BIBB
		H.C.	HOLLOW CORE
E	EAST	H/C	HANDICAPPED
(E)	EXISTING	HDWD.	HARDWOOD
EA.	EACH	HDWE.	HARDWARE
E.J.	EXPANSION JOINT	HM.	HOLLOW METAL
E.I.F.S.	EXTERIOR INSULATION AND FINISH SYSTEM	HR.	HOUR
EL. ELEV.	ELEVATION	HT.	HEIGHT
ELEC.	ELECTRICAL	HVAC	HEATING, VENTILATION AND AIR CONDITIONING
I.D.	INSIDE DIAMETER	R	RISER
INSUL.	INSULATION	R.D.	ROOF DRAIN
INT.	INTERIOR	RE.	REFER TO
		REFR.	REFRIGERATOR
JAN.	JANITOR	REINF.	REINFORCED
JNT.	JOINT	REQ'D.	REQUIRED
JST.	JOIST	RM	ROOM
		R.O.	ROUGH OPENING
KIT.	KITCHEN	S	SOUTH
		S.C.	SOLID CORE
LAB.	LABORATORY	SCHED.	SCHEDULE
LAM.	LAMINATE	SECT.	SECTION
LAV.	LAVATORY	SF.	SQUARE FOOT
LT.	LIGHT	SHT.	SHEET
		SIM.	SIMILAR
MAX.	MAXIMUM	SPEC.	SPECIFICATION
MECH.	MECHANICAL	SQ. OR #	SQUARE
MEMB.	MEMBRANE	S.S.	STAINLESS STEEL
MFR.	MANUFACTURER	STAGG.	STAGGERED
M.H.	MANHOLE	STD.	STANDARD
MIN.	MINIMUM	STIFF.	STIFFENER
MISC.	MISCELLANEOUS	STL.	STEEL
M.O.	MASONRY OPENING	STRUC.	STRUCTURAL
MTL.	METAL	SUSP.	SUSPENDED
MUL.	MULLION		
N	NORTH	TR	TREAD
N.I.C.	NOT IN CONTRACT	T & B	TOP AND BOTTOM
NO.	NUMBER	TER	TERRAZZO
NOM.	NOMINAL	T & G	TONGUE & GROOVE
N.T.S.	NOT TO SCALE	THK.	THICK
		T/	TOP OF
O.C.	ON CENTER	TYP.	TYPICAL
O.D.	OUTSIDE DIAMETER		
		U.O.N.	UNLESS OTHERWISE NOTED

"AS BUILT" BATHROOM RENOVATION AT GEM THEATER AT 118 NW 1ST AVENUE MULBERRY, FL. 33860



VICINITY MAP
SCALE: N.T.S.

INDEX OF DRAWINGS:

GENERAL:

TS TITLE SHEET

ARCHITECTURE:

A1 KEY PLAN, DEMOLITION PLAN, PROPOSED FLOOR PLAN

STRUCTURAL:

S1 DECK FRAMING PLAN, CEILING FRAMING PLAN, DETAIL

MECHANICAL:

M1 MECHANICAL PLAN

ELECTRICAL:

E1 ELECTRICAL PLAN

PLUMBING:

P1 PLUMBING PLAN

SYMBOLS LEGEND

 NUMBER SHEET NUMBER WHERE SECTION APPEARS	 REVISION	 CONCRETE
 NUMBER SHEET NUMBER WHERE DETAIL APPEARS	 CENTER LINE	 EARTH FILL
 ELEV. NUMBER SHEET NUMBER	 ELEVATION MARKER	



202 DORIS DRIVE SUITE 103
LAKELAND, FL 33813
PH. (863) 667-0500
FAX. (863) 667-0501
www.orbengineering.com

THESE DRAWINGS ARE THE PROPRIETARY WORK PRODUCT AND PROPERTY OF ORB ENGINEERING INC., DEVELOPED FOR THE EXCLUSIVE USE OF ORB ENGINEERING INC. USE OF THESE DRAWINGS AND CONCEPTS CONTAINED THEREIN WITHOUT THE WRITTEN PERMISSION OF ORB ENGINEERING INC. IS PROHIBITED AND MAY SUBJECT YOU TO A CLAIM FOR DAMAGES FROM ORB ENGINEERING INC.

XX-XX-XX
8-21-19

REVISIONS

DATE ISSUE

"AS BUILT" BATHROOM RENOVATION
AT GEM THEATER AT
118 NW 1ST. AVENUE
MULBERRY, FL. 33860

PROJECT

DRAWING **A1**

DRAWN CARLOS

CHECK JULIO

PROJECT NO. 1339.3

DATE 04-09-19

ORB ENGINEERING
202 DORIS DRIVE SUITE 103
LAKELAND, FL 33813
PH. (863) 667-0500
FAX. (863) 667-0501
www.orbengineering.com

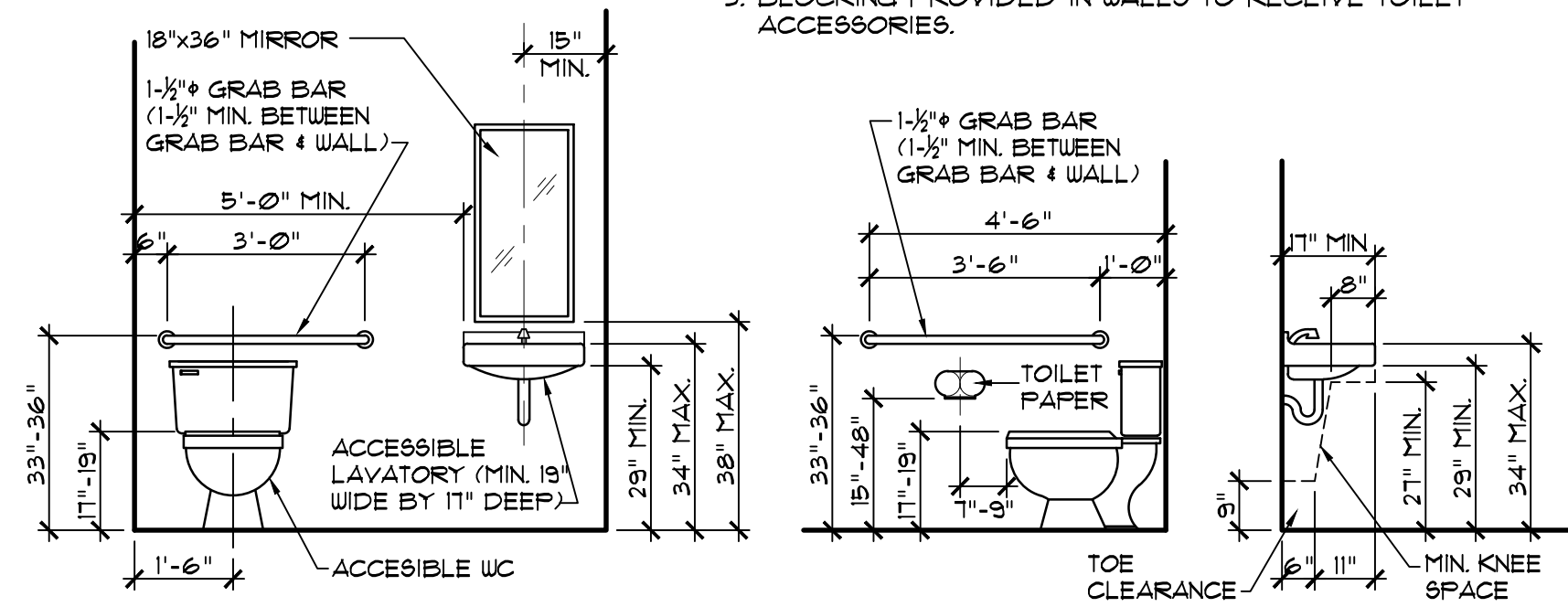
WALL SCHEDULE	
WALL	DESCRIPTION
1	EXISTING CMU WALL.
2	EXISTING 2x PARTITION
3	NEW 2x6 WOOD STUDS @16" O.C.
4	NEW 2x4 WOOD STUDS @16" O.C.
5	NEW 2x8 WOOD STUDS @16" O.C.

DOOR SCHEDULE						
DOOR	PHASE	DOOR SIZE	THICKN.	TYPE	FRAME	HARDWARE
1	EXIST.	(2)3'-0"x6'-8"	1-3/4"	-	-	BT, WS, CL, PA, TH
2	EXIST.	(2)2'-6"x6'-8"	1-3/4"	-	-	BT, WS, CL, PA,
3	NEW	3'-0"x6'-8"	1-3/4"	-	WOOD	BT, WS, CL
4	NEW	1'-8"x6'-8"	1-3/4"	-	WOOD	-

HARDWARE	
BT	1-1/2" FAIR BUTTS
WS	WALL STOP
CL	CLOSER
PL	PRIVACY LOCK
KL	KEYED LOCK
TH	THRESHOLD
KP	KICK PLATE
PA	PANIC HARDWARE
LV	LOUVER

BATHROOM FINISH NOTE:
WALLS AND PARTITIONS WITHIN 2 FEET OF WATER CLOSETS HAS A SMOOTH, HARD, NON-ABSORBENT SURFACE, TO A HEIGHT OF 4 FEET ABOVE THE FLOOR AND THE MATERIALS USED IN SUCH WALLS ARE NOT ADVERSELY AFFECTED BY MOISTURE.

- NOTES:**
- BATHROOMS PROVIDED WITH LEVER TYPE CONTROLS, TOILET TISSUE HOLDER, PAPER TOWEL HOLDER, SOAP DISPENSER AND WASTE RECEPTACLE.
 - PIPES WRAPPED AS REQUIRED BY ADA.
 - BLOCKING PROVIDED IN WALLS TO RECEIVE TOILET ACCESSORIES.



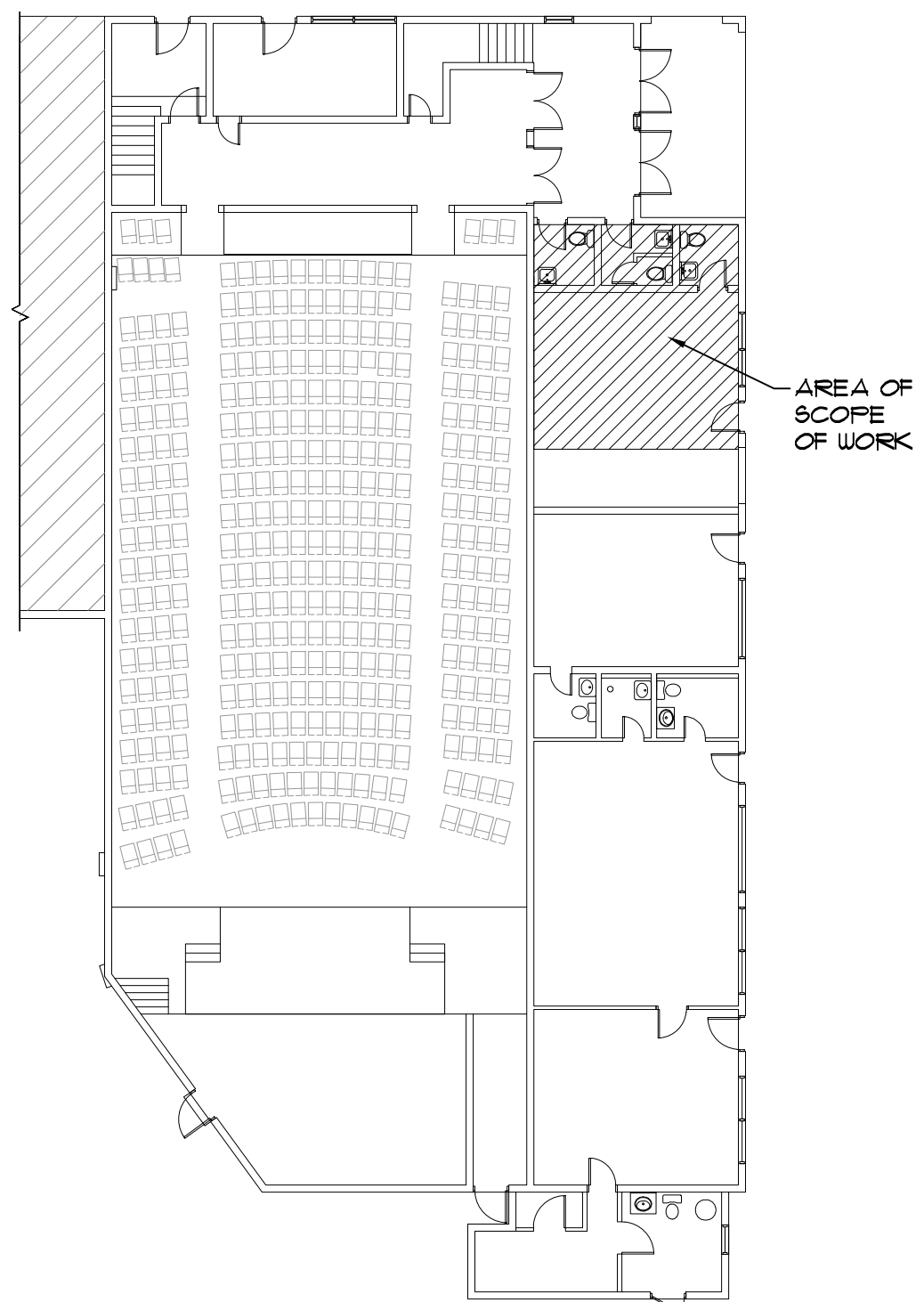
ADA TOILET CLEARANCES
SCALE: N.T.S.

DEMOLITION NOTE:
DASHED LINE INDICATES WALL, DOOR, WINDOW OR PLUMBING FIXTURE REMOVED.

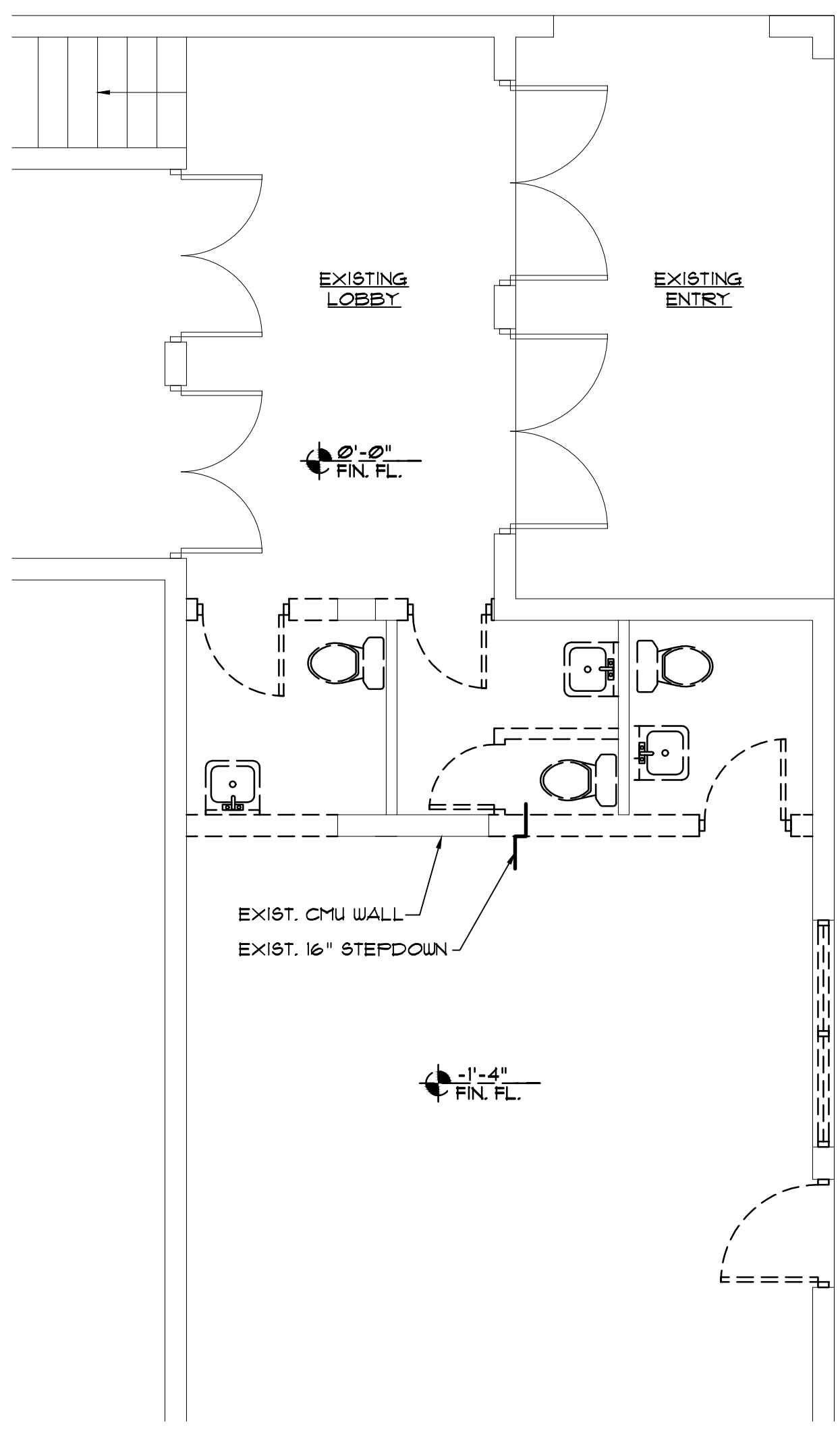
BUILDING CODE SUMMARY:
BUILDING CODE MET:

- FLORIDA BUILDING CODE, 6th EDITION 2017 BUILDING
- FLORIDA BUILDING CODE, 6th EDITION 2017, PLUMBING
- FLORIDA BUILDING CODE, 6th EDITION 2017, MECHANICAL
- FLORIDA BUILDING CODE, 6th EDITION 2017, ACCESSIBILITY
- FLORIDA BUILDING CODE, 6th EDITION 2017, EXISTING
- NATIONAL ELECTRIC CODE 2014
- FLORIDA FIRE PREVENTION CODE, 6th EDITION

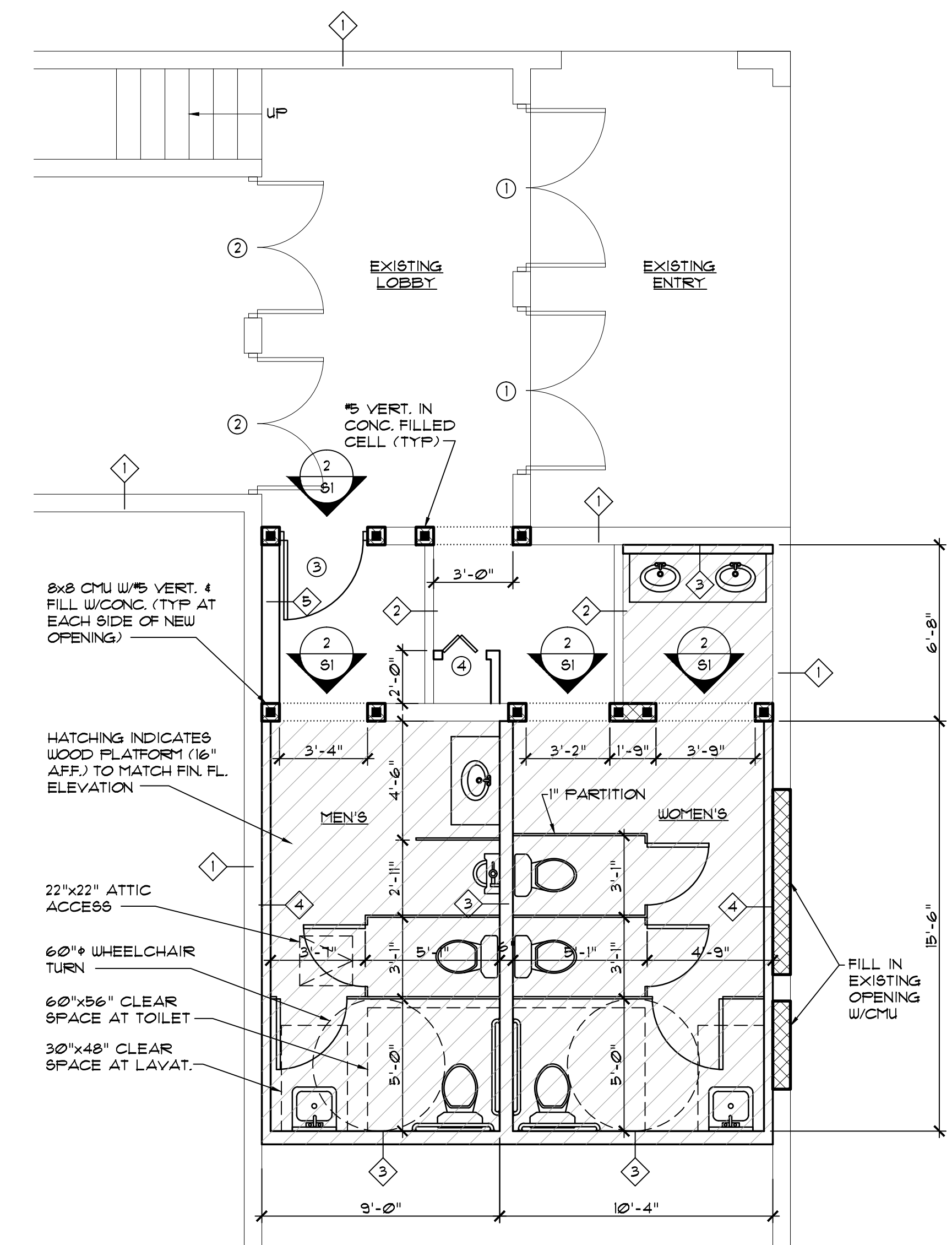
USE GROUP: ASSEMBLY A-1
CONSTRUCTION TYPE: III-B, UNPROTECTED
FIRE PROTECTION: NON-SPRINKLERED



KEY PLAN
SCALE: 1/16"=1'-0"



DEMOLITION PLAN
SCALE: 1/4"=1'-0"



PROPOSED FLOOR PLAN
SCALE: 1/4"=1'-0"

WRITTEN DIMENSIONS SHALL HAVE PRECEDENCE OVER SCALE DIMENSIONS. CONTRACTOR SHALL VERIFY AND BE RESPONSIBLE FOR DIMENSIONS AND CONDITIONS OF JOB AND ORB ENGINEERING, INC. MUST BE NOTIFIED IN WRITING OF ANY VARIATION FROM THE DIMENSIONS, CONDITIONS AND SPECIFICATIONS APPEARING ON THESE PLANS.

JULIO ORBEGOSO
FLORIDA P.E. 38769
DATE: _____

STRUCTURAL NOTES

GENERAL:

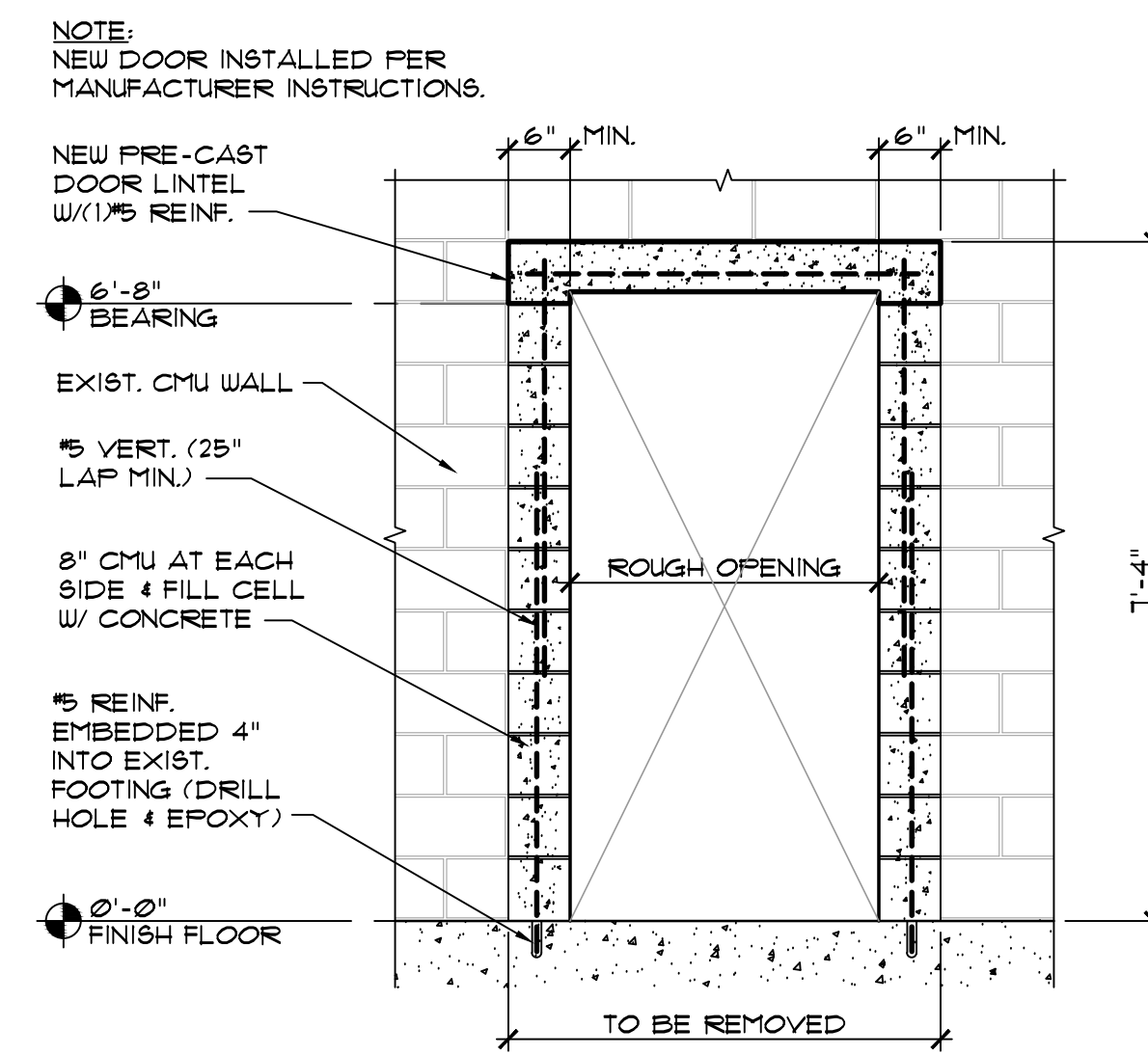
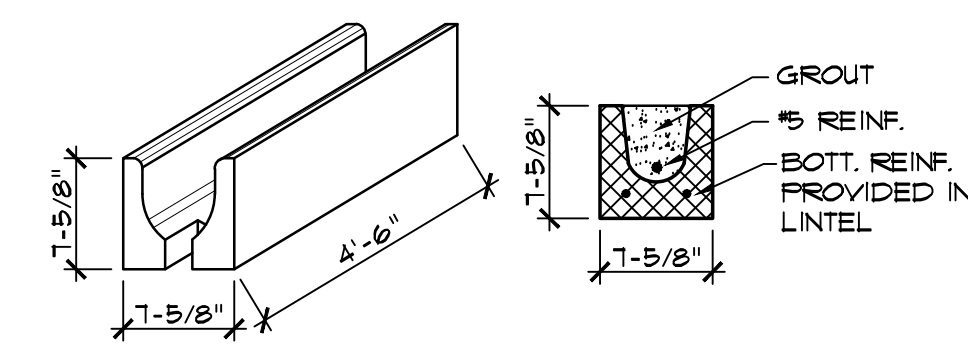
- All work is in strict accordance with the Florida Building Code 2017, 6th edition - Building.
- Hurricane clips or anchors provided at all connections.
- All wood framing designed, detailed, and fabricated in accordance with design specification for wood construction.
- Structural lumber provided:
Southern Pine grade #1 dense with Fb=1350 psi min.

CONCRETE:

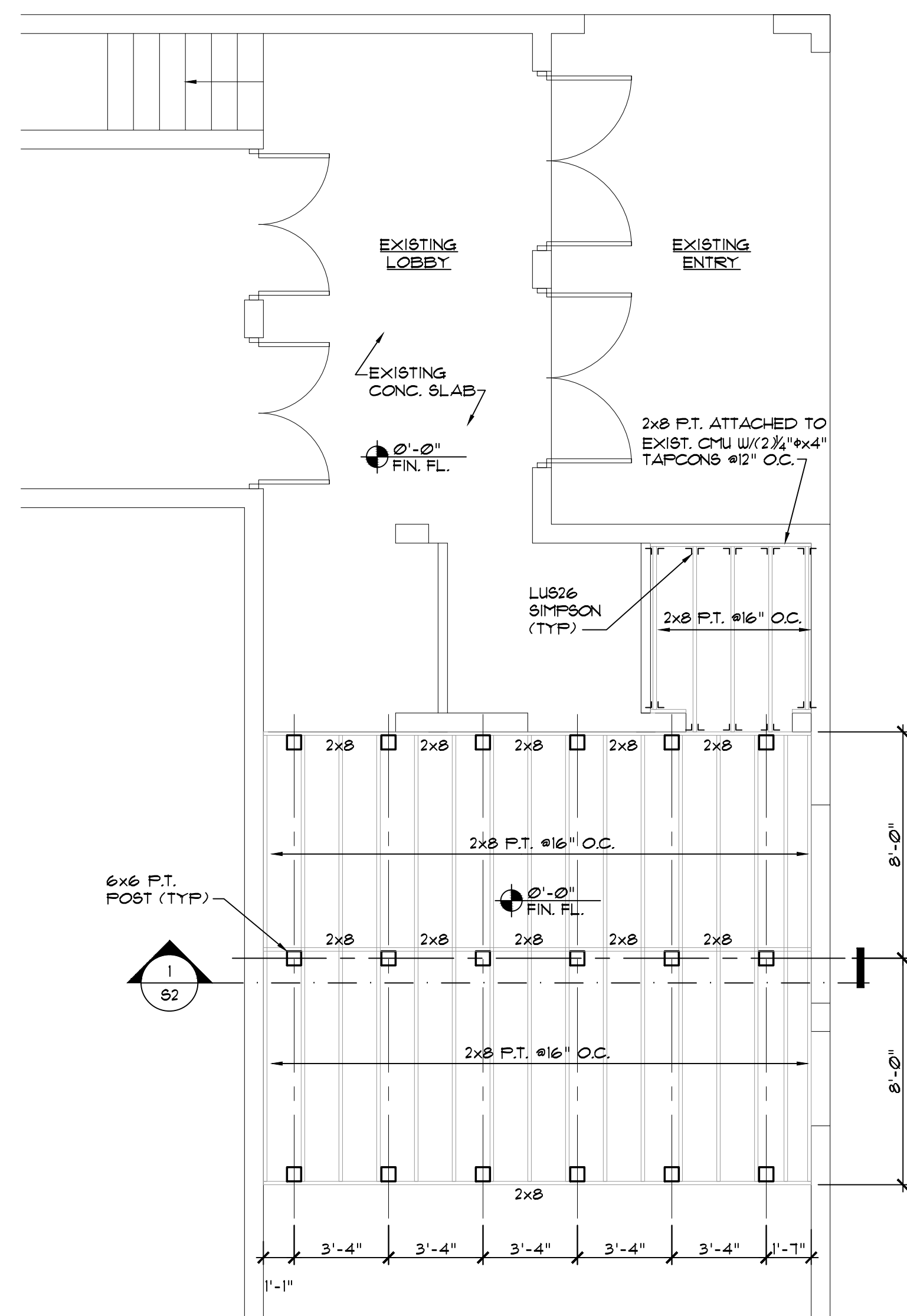
- All work in accordance with the ACI 318
- MIX DESIGN CRITERIA: Refer to the specifications.
All concrete Type I Portland Cement, (ASTM C 150), 3000 psi compressive strength @ 28 days. (U.O.N.) W/C ratio less or equal to 0.58
Slump - Slab on grade: 5"
Others: 3"
Water - Potable
Chloride - None
- Normal weight aggregates in compliance with the requirements of ASTM C 33.
- Reinforcing steel conformed to ASTM A-615, GRADE 60
- All concrete reinforcement has been detailed, fabricated, labeled, supported and spaced in forms and secured in place in accordance with the procedures outlined in the latest edition of the "Building Code Requirements for Reinforced Concrete" ACI 318-95 and the "Manuals of Standard Practice for Detailing Reinforced Concrete Structure", ACI 315 latest edition.
- All bar splices and dowels lapped as per requirements of ACI 318-95.

MASONRY:

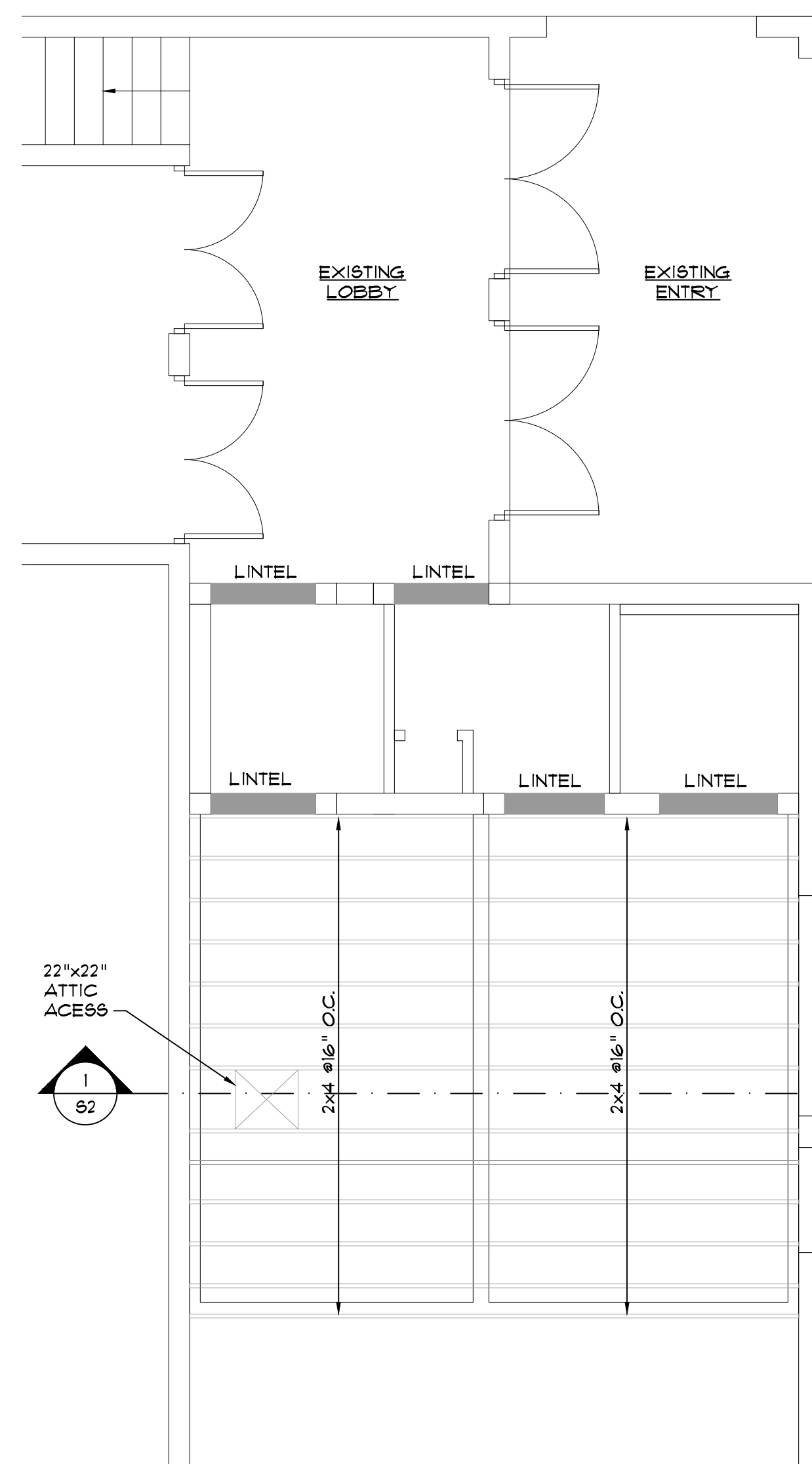
- Design, material and workmanship in accordance with the ACI Standard Building Code requirements for concrete masonry structures: ACI 530/ACI 530J
- CMU cells indicated in plan or notes as filled cells are grouted with 3000 psi concrete. (8" to 10" slump)
- HORIZONTAL JOINT REINFORCING at 24" o.c. vertical in all CMU walls.
- CMU concrete blocks conformed to ASTM C-90 (28 days strength 2000 psi) (Fm=1500 psi), laid in running bond.
- Mortar type S or M.
- Vertical reinforcing in CMU walls of (1/5 at 4'-0" max. O.C. (Typical U.O.N.)



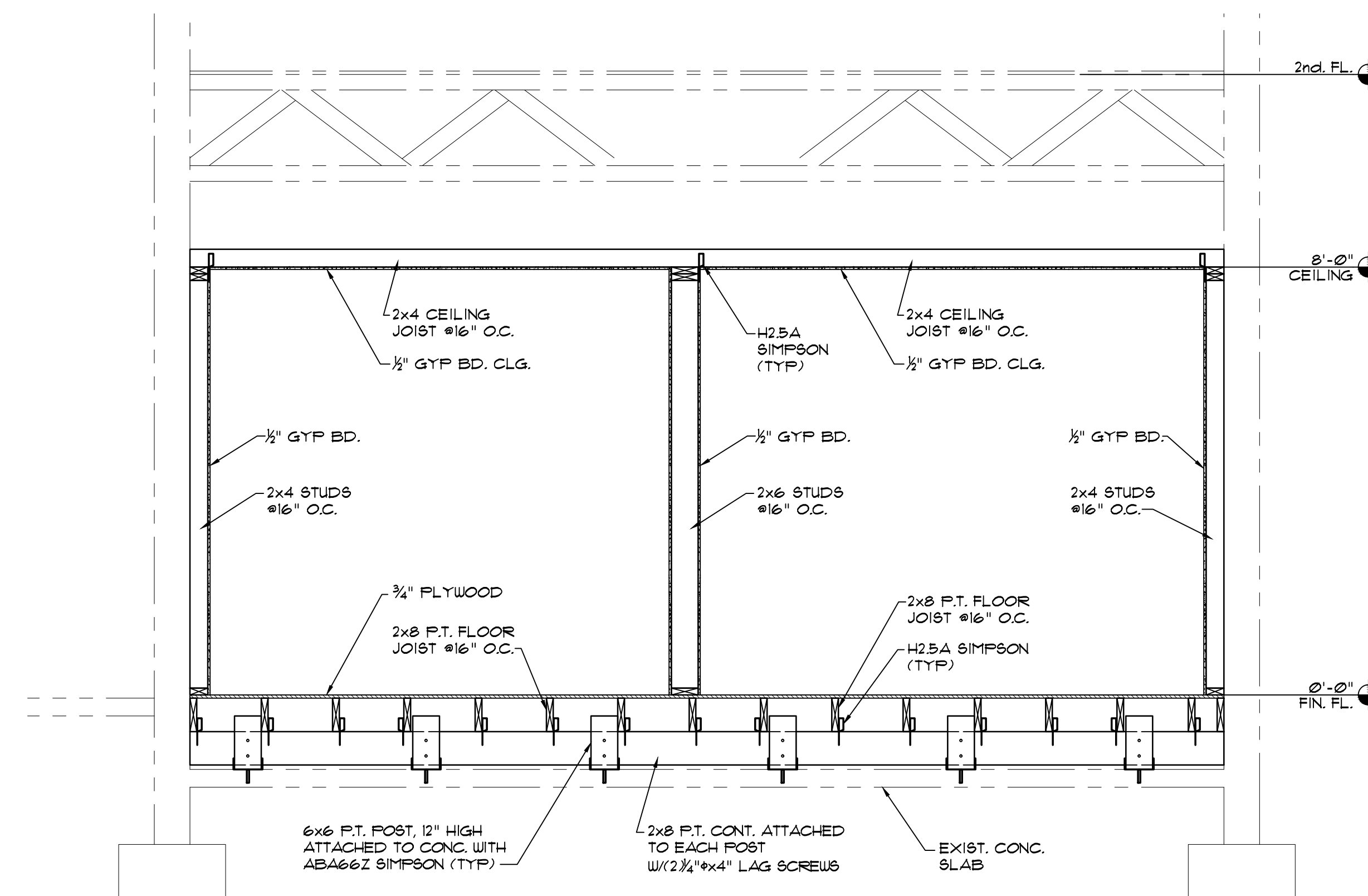
2 SECTION
SCALE: 3/4"=1'-0"



PLATFORM FRAMING PLAN
SCALE: 1/4"=1'-0"



CEILING FRAMING PLAN
SCALE: 1/4"=1'-0"



1 SECTION
SCALE: 3/4"=1'-0"

WRITTEN DIMENSIONS SHALL HAVE PRECEDENCE OVER SCALE DIMENSIONS. CONTRACTOR SHALL VERIFY AND BE RESPONSIBLE FOR DIMENSIONS AND CONDITIONS OF JOB AND ORB ENGINEERING, INC. MUST BE NOTIFIED IN WRITING OF ANY VARIATION FROM THE DIMENSIONS, CONDITIONS AND SPECIFICATIONS APPEARING ON THESE PLANS.

JULIO ORBEGOSO
FLORIDA P.E. 38769
DATE: _____

THESE DRAWINGS ARE THE PROPRIETARY WORK PRODUCT AND PROPERTY OF ORB ENGINEERING INC., DEVELOPED FOR THE EXCLUSIVE USE OF ORB ENGINEERING INC. USE OF THESE DRAWINGS AND CONCEPTS CONTAINED THEREIN WITHOUT THE WRITTEN PERMISSION OF ORB ENGINEERING INC. IS PROHIBITED AND MAY SUBJECT YOU TO A CLAIM FOR DAMAGES FROM ORB ENGINEERING INC.

△	XX-XX-XX
△	8-27-19

REVISIONS

DATE ISSUE

"AS BUILT" BATHROOM RENOVATION
AT GEM THEATER AT
118 NW 1ST. AVENUE
MULBERRY, FL. 33860

PROJECT

DRAWING **S1**

DRAWN CARLOS

CHECK JULIO

PROJECT NO. 1339.3

DATE 04-09-19

ORB ENGINEERING
202 DORIS DRIVE SUITE 103
LAKELAND, FL 33813
PH. (863) 667-0500
FAX. (863) 667-0501
www.orbengineering.com

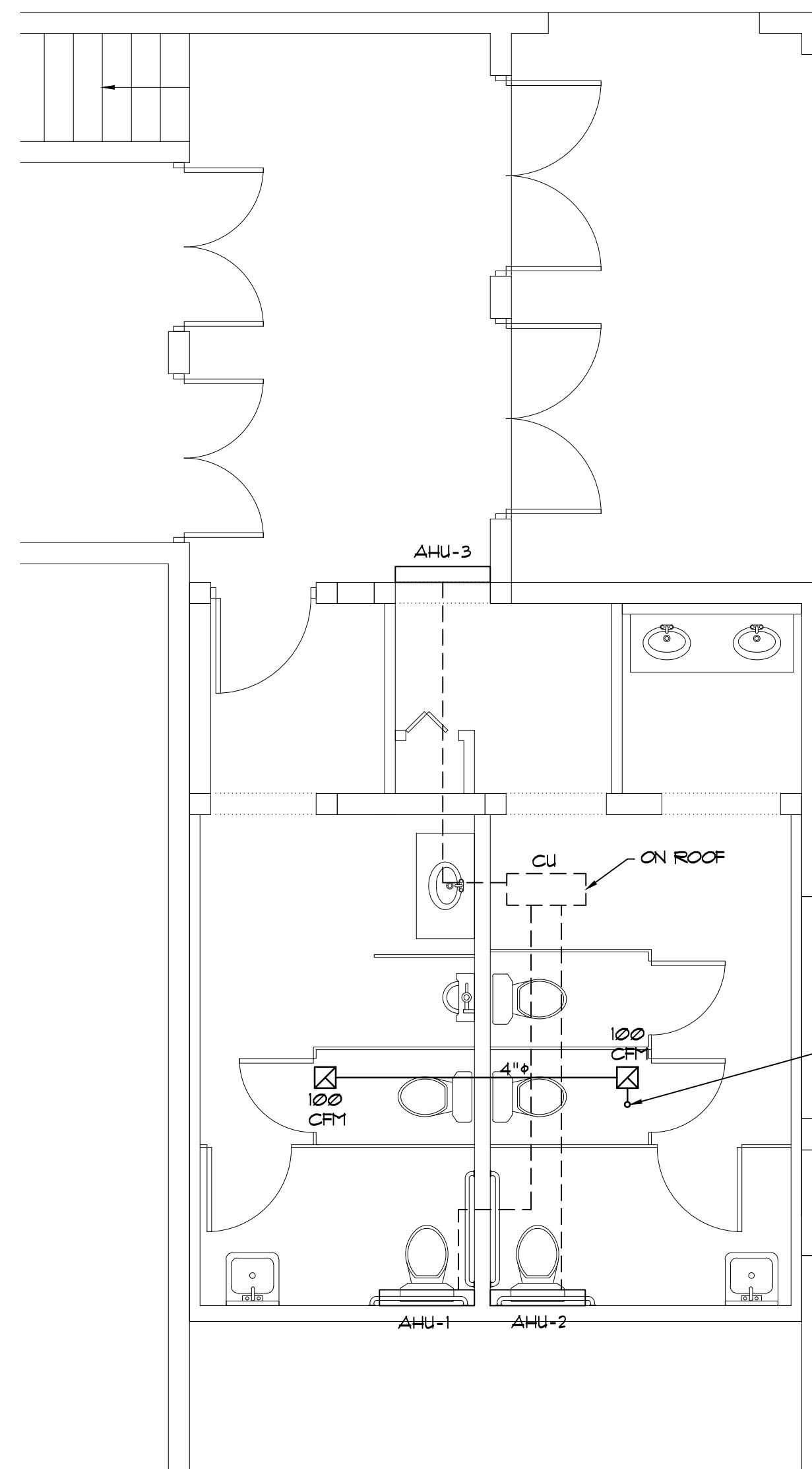
THESE DRAWINGS ARE THE PROPRIETARY WORK PRODUCT AND PROPERTY OF ORB ENGINEERING INC., DEVELOPED FOR THE EXCLUSIVE USE OF ORB ENGINEERING INC. USE OF THESE DRAWINGS AND CONCEPTS CONTAINED THEREIN WITHOUT THE WRITTEN PERMISSION OF ORB ENGINEERING INC. IS PROHIBITED AND MAY SUBJECT YOU TO A CLAIM FOR DAMAGES FROM ORB ENGINEERING INC.

△	XX-XX-XX
△	8-27-19

REVISIONS

DATE | ISSUE

MECHANICAL LEGEND	
SYMBOL	DESCRIPTION
☒	EXHAUST FAN



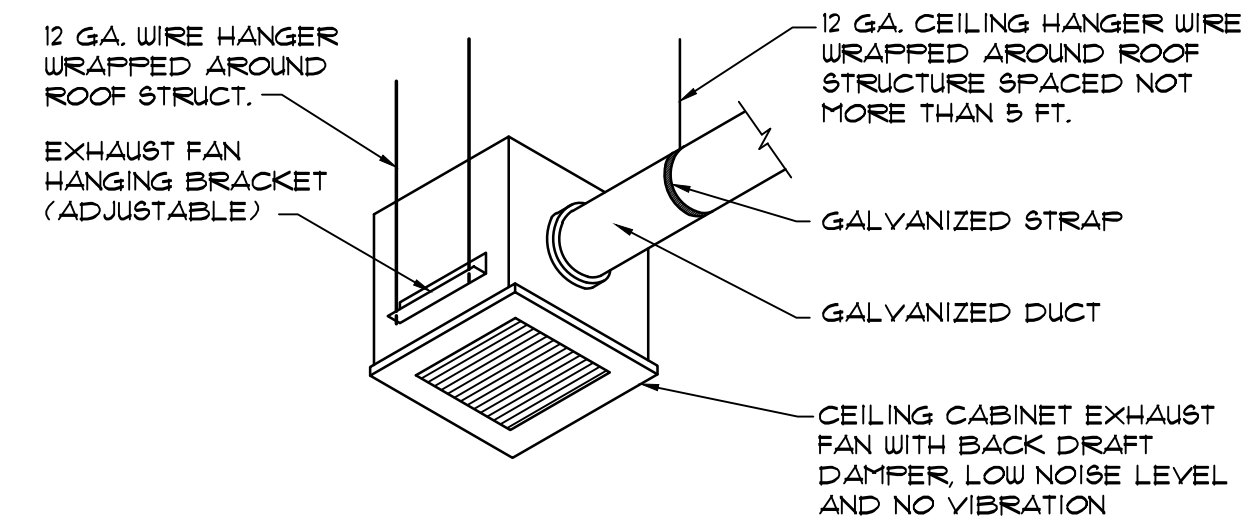
MECHANICAL PLAN
SCALE: 1/4" = 1'-0"

MECHANICAL NOTES

1. ALL MECHANICAL WORK COMPLY WITH FBC, 6TH EDITION 2011 - MECHANICAL
2. ALL EXHAUST DUCTWORK IS GALVANIZED SHEET METAL.

NOTE:
A/C/ MULTI SPLIT UNIT
INSTALLED BY OTHERS

ROUTE 4"Ø TO
ROOFTOP 10 FT. AWAY
FROM OPENINGS &
FRESH AIR INTAKES



EXHAUST FAN DETAIL

SCALE: N.T.S.

EXHAUST FAN DATA	
MANUFACTURER	mitsubishi
MODEL	FV-05-11VK1
CFM	50/ 80/ 100
VOLTAGE	120 V.
TYPE	CEILING
DUCT DIAM.	4" OR 6"
RPM	141, 814, 931
EXT. S.P.	03

WRITTEN DIMENSIONS SHALL HAVE PRECEDENCE OVER SCALE DIMENSIONS. CONTRACTOR SHALL VERIFY AND BE RESPONSIBLE FOR DIMENSIONS AND CONDITIONS OF JOB AND ORB ENGINEERING, INC. MUST BE NOTIFIED IN WRITING OF ANY VARIATION FROM THE DIMENSIONS, CONDITIONS AND SPECIFICATIONS APPEARING ON THESE PLANS.

JULIO ORBEGOSO
FLORIDA P.E. 38769
DATE: _____

"AS BUILT" BATHROOM RENOVATION
AT GEM THEATER AT
1118 NW 1ST. AVENUE
MULBERRY, FL. 33860

PROJECT _____

DRAWING **M1**

DRAWN **CARLOS**

CHECK **JULIO**

PROJECT No. **1339.3**

DATE **04-09-19**

ORB
ENGINEERING
202 DORIS DRIVE SUITE 103
LAKELAND, FL 33813
PH. (863) 667-0500
FAX. (863) 667-0501
www.orbengineering.com

THESE DRAWINGS ARE THE PROPRIETARY WORK PRODUCT AND PROPERTY OF ORB ENGINEERING INC., DEVELOPED FOR THE EXCLUSIVE USE OF ORB ENGINEERING INC. USE OF THESE DRAWINGS AND CONCEPTS CONTAINED THEREIN WITHOUT THE WRITTEN PERMISSION OF ORB ENGINEERING INC. IS PROHIBITED AND MAY SUBJECT YOU TO A CLAIM FOR DAMAGES FROM ORB ENGINEERING INC.

△	XX-XX-XX
△	8-21-19

REVISIONS

DATE ISSUE

DEMOLITION:

1. WIRING AND EQUIPMENT/DEVICES WHICH ARE NOT NECESSARY FOR THE FUNCTION OF NEW EQUIPMENT/DEVICES REMOVED.
2. ABANDONED WIRING AND ACCESSIBLE RACEWAYS REMOVED.
3. EXISTING WIRING DEVICES REMOVED AS REQUIRED FOR THE REMOVAL OF WALLS AND/OR THE INSTALLATION OF NEW WALL FINISHES.
4. EXIT LIGHTING FIXTURES AND EMERGENCY LIGHTING UNITS CHECKED FOR PROPER OPERATION OF BATTERY BACK-UP.

GENERAL NOTES:

1. ALL WORK IN ACCORDANCE WITH THE 2017 FLORIDA BUILDING CODE AND THE 2014 NATIONAL ELECTRICAL CODE. WORK ALSO COMPLY WITH ALL APPLICABLE RULES AND REGULATIONS OF LOCAL LAWS AND ORDINANCES.
2. ALL EQUIPMENT INSTALLED IS LISTED AND LABELED BY A NATIONALLY RECOGNIZED TESTING LABORATORY (NRTL) AND/OR LISTED AND LABELED AS AN ASSEMBLY BY AN NRTL PER NEC ARTICLE 90.7.

WIRE/RACEWAY:

6. ALL CONDUCTORS ARE COPPER, CONDUCTOR INSULATION ARE DUAL TYPE THHN/THWN 75°C (167°F) FOR DRY, DAMP, AND WET LOCATIONS. ALL CONDUCTORS ARE COLOR CODED AS REQUIRED BY NEC AND FURTHER IDENTIFIED AND CODED AS SPECIFIED HEREINAFTER.

- A) GROUND LEADS: GREEN
 B) 120/240 VOLT UNGROUNDED PHASE WIRES:
 PHASE A: BLACK
 PHASE B: ORANGE (HIGH LEG)
 PHASE C: BLUE
 NEUTRAL: WHITE

- C) 120/240 VOLT UNGROUNDED PHASE WIRES:
 PHASE A: BLACK
 PHASE B: RED
 NEUTRAL: WHITE

THE COLOR CODE ASSIGNED TO EACH PHASE IS CONSISTENTLY FOLLOWED THROUGHOUT.

7. THE CONDUCTORS FOR FEEDERS AND BRANCH CIRCUITS COMBINED ARE SIZED FOR A MAXIMUM OF 5 PERCENT VOLTAGE DROP TOTAL PER FBC C405.6.3.
8. ALL RACEWAYS ARE PROPERLY ALIGNED, GROUPED, AND SUPPORTED BY MECHANICAL TYPE 'CADDY' CLIPS AT INTERVALS NOT EXCEEDING 8 FEET.
9. ALL RACEWAYS WITH NO. 10 OR 12 AWG PHASE CONDUCTORS FOR RECEPTACLES, LIGHTING FIXTURES AND SIMILAR CIRCUITS ARE PROVIDED WITH A PARITY SIZED GREEN EQUIPMENT GROUND CONDUCTOR. GROUND CONDUCTOR IS INSTALLED IN ENTIRE RACEWAY SYSTEM INCLUDING WALL SWITCHES AND FLEXIBLE CONDUIT TO LIGHT FIXTURES.

GROUNDING:

1. THE ENTIRE ELECTRICAL SYSTEM IS COMPLETELY AND EFFECTIVELY GROUNDED AS REQUIRED BY NATIONAL ELECTRICAL CODE. ALL METALLIC RACEWAYS ARE MECHANICALLY AND ELECTRICALLY SECURE AT ALL JOINTS AND AT ALL BOXES, CABINETS, FITTINGS AND EQUIPMENT.

OUTLET BOXES/DEVICES:

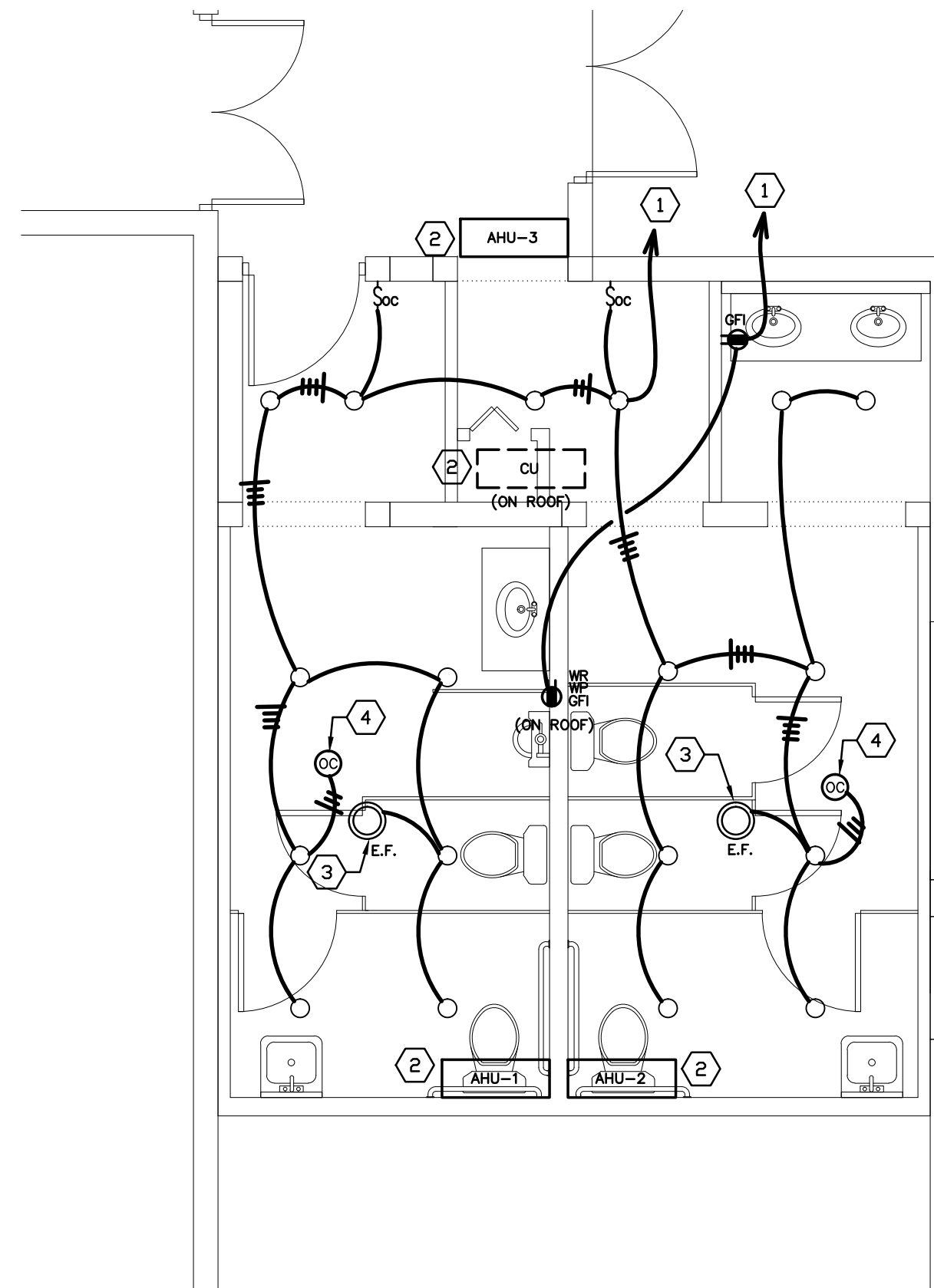
2. ALL OUTLET BOXES SHALL BE RIGIDLY MOUNTED AND ARE EQUIPPED WITH SUITABLE SCREW FASTENED COVERS. OPEN KNOCKOUTS OR HOLES IN BOXES ARE PLUGGED WITH SUITABLE BLANKING DEVICE.
3. OUTLET BOXES SHALL BE 4 INCH SQUARE x 2-1/8" DEEP.
4. RECEPTACLES WITHIN (6) FEET OF A SINK HAVE GFCI PROTECTION.

SWITCHGEAR:

1. PANELBOARDS MANUFACTURED BY SQUARE 'D' COMPANY, FURNISHED WITH COPPER BUS BARS, COPPER EQUIPMENT GROUND BUS AND BOLT-ON CIRCUIT BREAKERS.
2. DISCONNECT SWITCHES ARE HEAVY-DUTY TYPE AND MANUFACTURED BY SQUARE 'D' COMPANY. FUSES ARE DUAL ELEMENT, CARTRIDGE TYPE.
3. ENGRAVED PLASTIC-LAMINATE LABELS INSTALLED ON EACH MAJOR UNIT OF ELECTRICAL EQUIPMENT IDENTIFYING PANELBOARD NAME OR EQUIPMENT SERVING.
4. PANELBOARD DIRECTORY CARDS TYPEWRITTEN WITH ACCURATE AND CURRENT INFORMATION BY THE CONTRACTOR AT THE END OF CONSTRUCTION.

LIGHTING FIXTURES:

1. THE CONTRACTOR SHALL FURNISH AND INSTALL COMPLETE IN ALL RESPECTS ALL LIGHTING FIXTURES LISTED IN THE FIXTURE SCHEDULE.
2. LED FIXTURES HAVE 3500K COLOR TEMP.
3. LED DRIVERS COMPLY WITH UL STANDARD UL1012 AND SHALL HAVE CLASS A SOUND RATING.
4. ALL FIXTURES ARE PROPERLY AND CAREFULLY SUPPORTED AND ALIGNED.



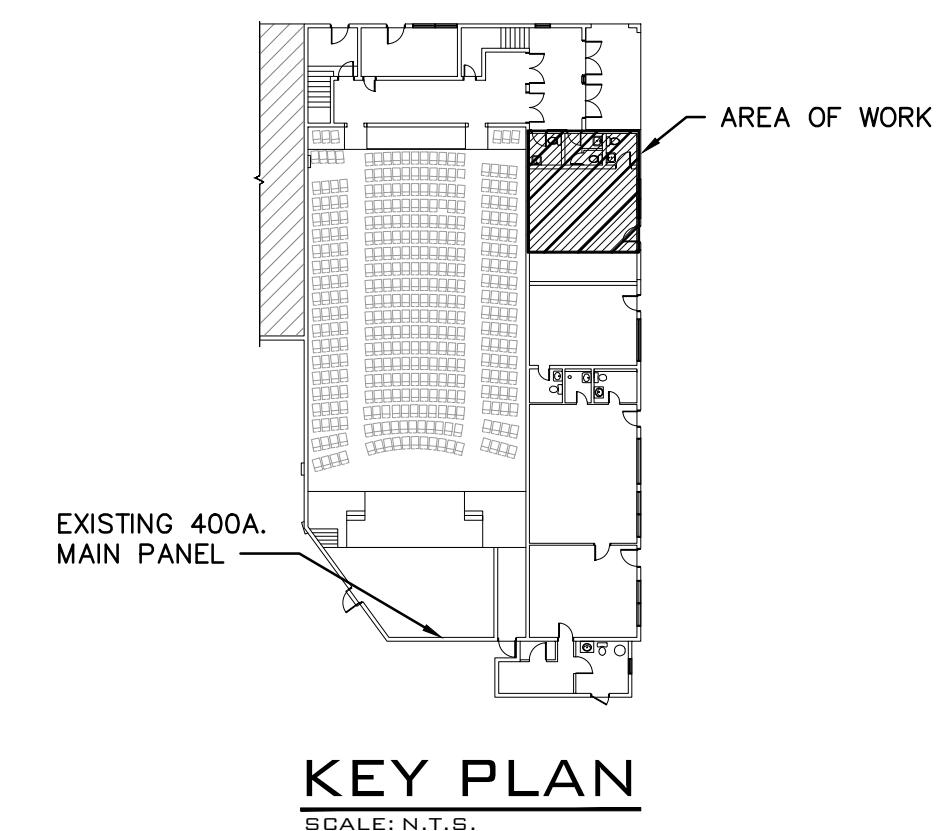
ELECTRICAL PLAN

SCALE: 1/4"=1'-0"

DRAWING NOTES:

1. CONNECT TO 20A.-1P. CIRCUIT BREAKER IN MAIN 400 AMP PANEL.
2. AIR CONDITIONING EQUIPMENT INSTALLED BY OTHERS.
3. CONNECT EXHAUST FAN TO SWITCHED LEG OF ROOM LIGHTING CIRCUIT.
4. WIRE OCCUPANCY SENSOR IN PARALLEL WITH WALL MOUNTED OCCUPANCY SENSOR.

ELECTRICAL SYMBOL LEGEND		
SYMBOL	DESCRIPTION	MOUNTING
○	6" DIA LED DOWNLIGHT (15 WATT)	CEILING RECESSED
⏏	WALL MOUNTED SINGLE RELAY OCCUPANCY SENSOR.	FLUSH IN WALL M.H. 48" TO CENTERLINE
⊙	LINE VOLTAGE OCCUPANCY SENSOR.	CEILING SURFACE
⊕	DUPLEX RECEPTACLE (20A., 125V.)	M.H. 48" TO CENTERLINE
GFI	'GFI' DENOTES GROUND FAULT INTERRUPTER TYPE RECEPTACLE	
WP	'WP' DENOTES WEATHERPROOF COVERPLATE	
WR	'WR' DENOTES WEATHER RESISTANT	
■	120/240V. POWER PANELBOARD	EXISTING
⊙	EXHAUST FAN	BY OTHERS
⌒	RACEWAY CONCEALED IN WALL OR CEILINGS	SEE SPECIFICATIONS
⌒	RACEWAY CONCEALED UNDER FLOOR OR BENEATH GRADE	SEE SPECIFICATIONS
⌒	HOMERUN TO PANEL. LETTERS INDICATE PANEL, NUMBERS INDICATE CIRCUIT. NOTE: ANY CIRCUIT WITHOUT FURTHER DESIGNATION INDICATES A TWO WIRE AND EQUIPMENT GROUND CIRCUIT. A GREATER NUMBER OF WIRES IS INDICATED AS SHOWN: ⌒ (3 WIRES & EQUIPMENT GROUND), ⌒ (4 WIRES & EQUIPMENT GROUND), ETC.	AS NOTED



KEY PLAN

SCALE: N.T.S.

WRITTEN DIMENSIONS SHALL HAVE PRECEDENCE OVER SCALE DIMENSIONS. CONTRACTOR SHALL VERIFY AND BE RESPONSIBLE FOR DIMENSIONS AND CONDITIONS OF JOB AND ORB ENGINEERING, INC. MUST BE NOTIFIED IN WRITING OF ANY VARIATION FROM THE DIMENSIONS, CONDITIONS AND SPECIFICATIONS APPEARING ON THESE PLANS.

JULIO ORBEGOSO
 FLORIDA P.E. 38769
 DATE: _____

"AS BUILT" BATHROOM RENOVATION
 AT GEM THEATER AT
 118 NW 1ST. AVENUE
 MULBERRY, FL. 33860

PROJECT

DRAWING **E1**

DRAWN CARLOS

CHECK JULIO

PROJECT NO. 1339.3

DATE 04-09-19

ORB ENGINEERING
 202 DORIS DRIVE SUITE 103
 LAKELAND, FL 33813
 PH. (863) 667-0500
 FAX. (863) 667-0501
 www.orbengineering.com

THESE DRAWINGS ARE THE PROPRIETARY WORK PRODUCT AND PROPERTY OF ORB ENGINEERING INC., DEVELOPED FOR THE EXCLUSIVE USE OF ORB ENGINEERING INC. USE OF THESE DRAWINGS AND CONCEPTS CONTAINED THEREIN WITHOUT THE WRITTEN PERMISSION OF ORB ENGINEERING INC. IS PROHIBITED AND MAY SUBJECT YOU TO A CLAIM FOR DAMAGES FROM ORB ENGINEERING INC.

XX-XX-XX
8-21-19

REVISIONS

DATE ISSUE

PLUMBING LEGEND	
SYMBOL	DESCRIPTION
—	SANITARY LINE
----	VENT PIPE
---	COLD WATER LINE
⊗	SHUT OFF VALVE
⊕	CLEAN OUT

PLUMBING NOTES

GENERAL:

1. PLUMBING WORK IN COMPLIANCE WITH FBC, 6th EDITION 2011 - PLUMBING.
2. ALL PIPING CONCEALED ABOVE CEILINGS, WITHIN WALLS OR CHASES, EXCEPT AS SPECIFICALLY NOTED.

SANITARY PIPING:

1. ALL SANITARY DRAIN, WASTE, VENT PIPE AND FITTINGS ARE SCHEDULE 40 PVC.
2. HORIZONTAL BUILDING DRAINAGE PIPING OF 2" DIAMETER AND SMALLER HAVE A LINE PITCH OF 1/4" PER FOOT. HORIZONTAL DRAINAGE PIPING OF 3" DIAMETER OR LARGER ARE INSTALLED WITH A LINE PITCH OF NOT LESS THAN 1/8" PER FOOT.

CLEANOUTS:

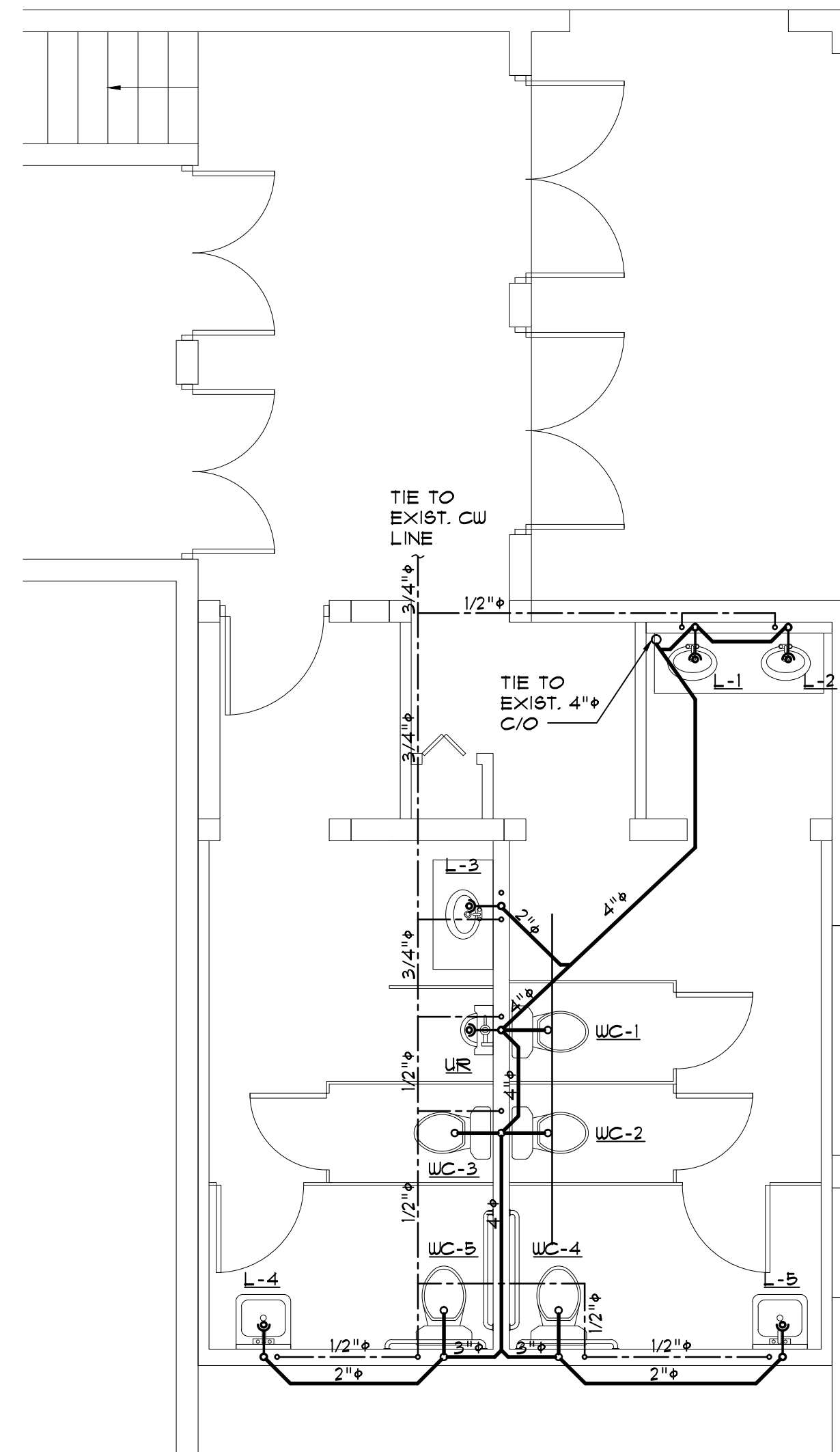
1. CLEANOUTS ON WALLS AND/OR FLOORS LOCATED AS NECESSARY FOR ACCESS AND EASY OF USE.

WATER PIPING:

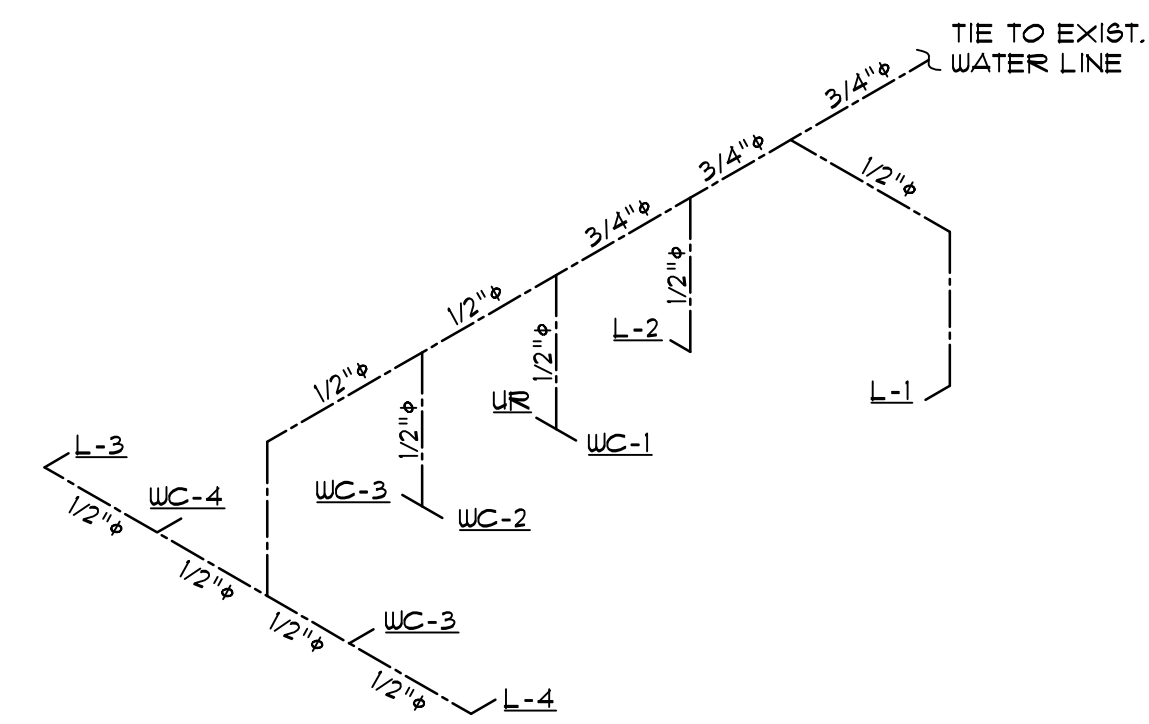
1. PIPING RUN IN CEILINGS, WALLS OR ATTIC SPACES AND ISOLATED FROM CONTACT WITH OTHER METALS OR MASONRY.

FIXTURES:

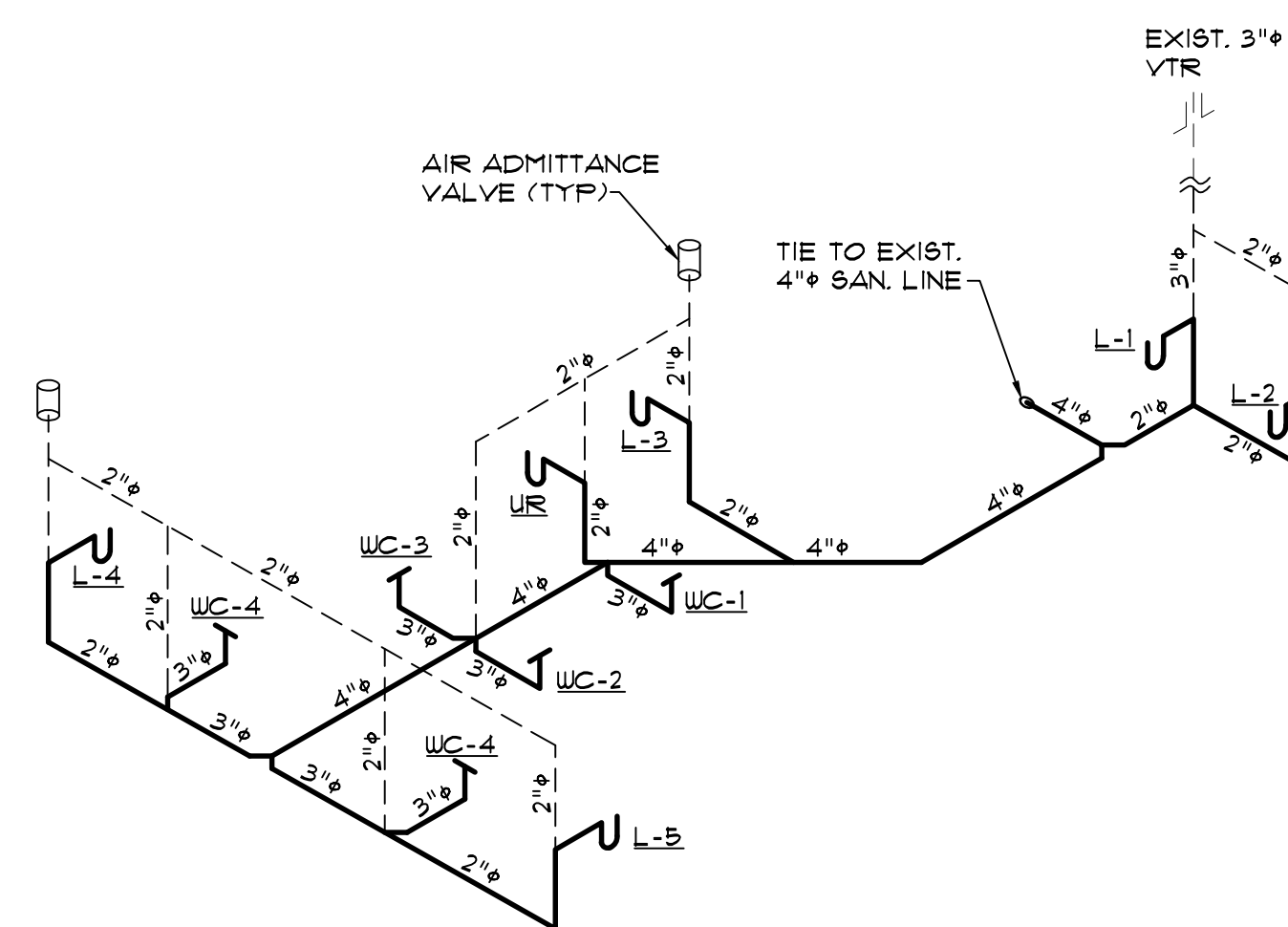
1. ALL PLUMBING FIXTURES INSTALLED PER MANUFACTURER RECOMMENDATIONS. ALL WALL HUNG FIXTURES ARE PROVIDED WITH WALL CARRIERS AND ARE CAPABLE OF SUPPORTING A 250 LB. VERTICAL LOAD.



PLUMBING PLAN
SCALE: 1/4" = 1'-0"



WATER RISER DIAGRAM
SCALE: N.T.S.



SANITARY RISER DIAGRAM
SCALE: N.T.S.

"AS BUILT" BATHROOM RENOVATION
AT GEM THEATER AT
118 NW 1ST. AVENUE
MULBERRY, FL. 33860

PROJECT

DRAWING **P1**

DRAWN CARLOS

CHECK JULIO

PROJECT No. 1339.3

DATE 04-09-19

WRITTEN DIMENSIONS SHALL HAVE PRECEDENCE OVER SCALE DIMENSIONS. CONTRACTOR SHALL VERIFY AND BE RESPONSIBLE FOR DIMENSIONS AND CONDITIONS OF JOB AND ORB ENGINEERING, INC. MUST BE NOTIFIED IN WRITING OF ANY VARIATION FROM THE DIMENSIONS, CONDITIONS AND SPECIFICATIONS APPEARING ON THESE PLANS.

JULIO ORBEGOSO
FLORIDA P.E. 38769
DATE: _____

ORB ENGINEERING
202 DORIS DRIVE SUITE 103
LAKELAND, FL 33813
PH. (863) 667-0500
FAX. (863) 667-0501
www.orbengineering.com